

## **Midland Women's Cross Country league Division 2 Race 4**

**Saturday February 8th 2020 1.30pm.**

**Venue Aldridge Airport, Bosty Lane, Aldridge, WS9 0QQ**

### **From M6 Northbound**

Leave the motorway at Junction 7 and follow the A34 sign towards Walsall. As the slip road joins the A34 keep in the right hand lane and go straight across at the Give Way sign into the outside lane, you can then turn right at the traffic lights into Chapel Lane. Follow this lane for approximately 2 miles then turn left at the T junction B4154. Go straight across at the traffic lights and turn left at the next T junction. The entrance for Aldridge Airport will be 1/2 mile on the left.

### **From M5 Northbound**

Follow the signs for the M6 Southbound (Airport&NEC). Stay in the left-hand lane of the M6(A34 Junction). Then follow as above.

### **From M6 Southbound**

Leave the M6 at Junction 10. Turn left follow the Walsall ring road (A454/A4148) for approximately 1.8 miles (signposted Lichfield A461) At the Walsall Arboretum traffic lights turn left (signposted Aldridge A454). At the next roundabout go straight ahead towards Aldridge A454. After approximately 2 miles you will come to a set of traffic lights by the Whitehouse Pub. Turn right the entrance to Aldridge Airport will be 1/3 mile on the right.

### **From A5 South**

Turn left at Muckley Corner roundabout Walsall A461s follow this road for approximately 5 miles over 3 sets of traffic lights. At the 4th set of (double) traffic lights in Rushall by Macdonalds turn left (signposted Aldridge B4154). After 2 miles go straight across the traffic lights by the Whitehouse Pub. The entrance to Aldridge Airport will be 1/3 mile on the right.

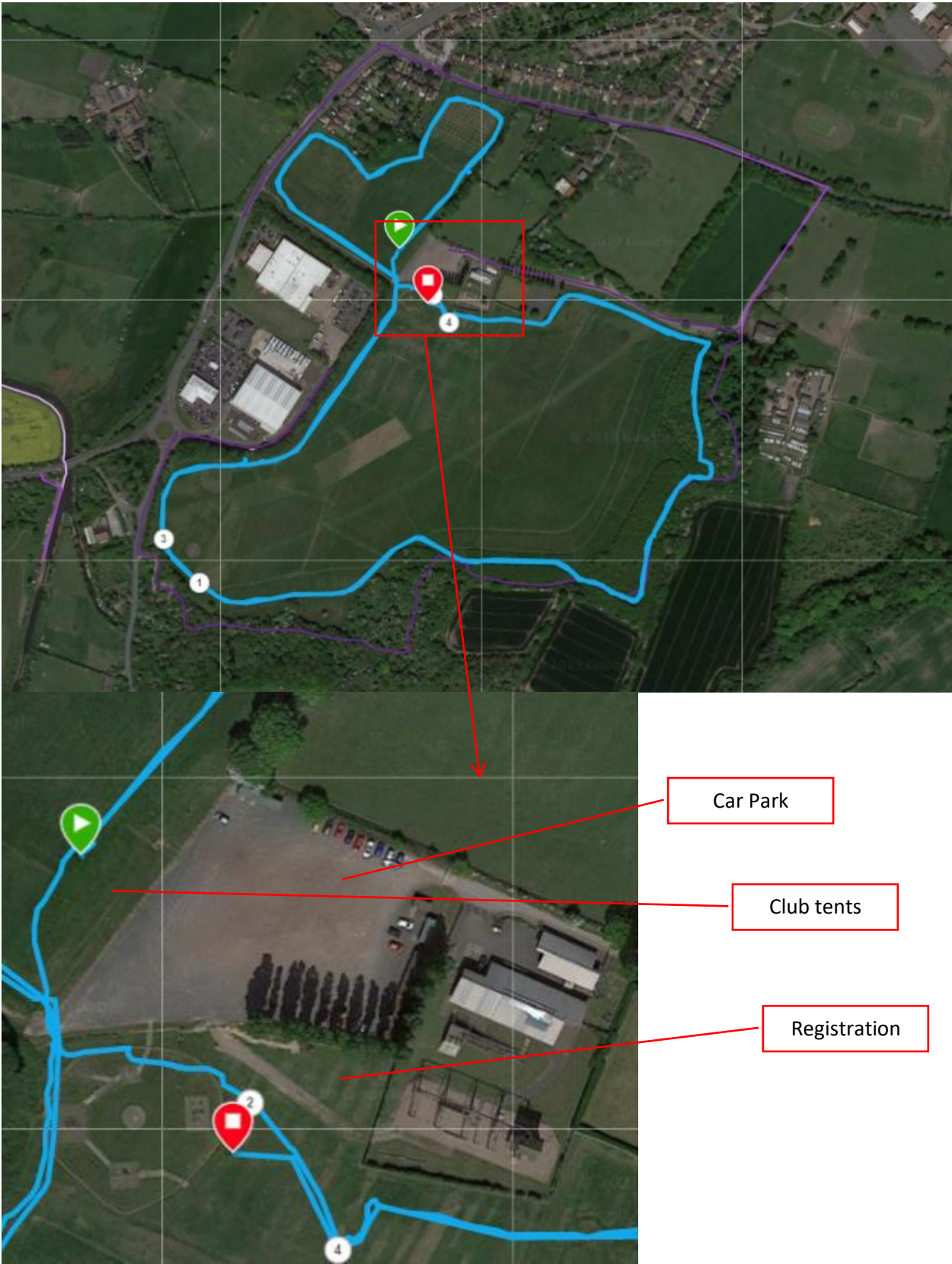
### **From A5 North**

Turn right at the A452 go straight through Brownhills up the hill then turn right at the traffic lights towards Walsall A461. At the 3rd set of (double) traffic lights in Rushall by Macdonalds turn left (signposted Aldridge B4154). After 2 miles go straight across the traffic lights by the Whitehouse Pub. The entrance to Aldridge Airport will be 1/3 mile on the right.

**Contact:** Anne Kelsall (07740 541297, [annekelsall@gmail.com](mailto:annekelsall@gmail.com)).

On entering the Airport, drive all the way down to the car park at the bottom, which should be sufficient for all cars. However, space is not unlimited and car sharing is advised. The start and finish are both adjacent to the car park and you may find that a tent is unnecessary. However, should you wish to bring a tent there will be space on the field, although it is quite exposed if it is windy. Because the car park is adjacent to the course there is no special parking area for officials/tents.

The Course



The course consists of two complete laps, largely on grass, which in recent weeks has been rather muddy/boggy in some places, with a path through the woods after about 1.5 miles. This path can be very muddy. After a short rise at the start the first half of the course is slightly downhill, climbing back in the second half. The course is suitable for spikes.



**Facilities:**

Portable toilets will be available on the car park, where there will also be a van selling hot drinks and snacks.

After the finish of the race, at approximately xx:xxpm, there will be presentations outside the registration tent.